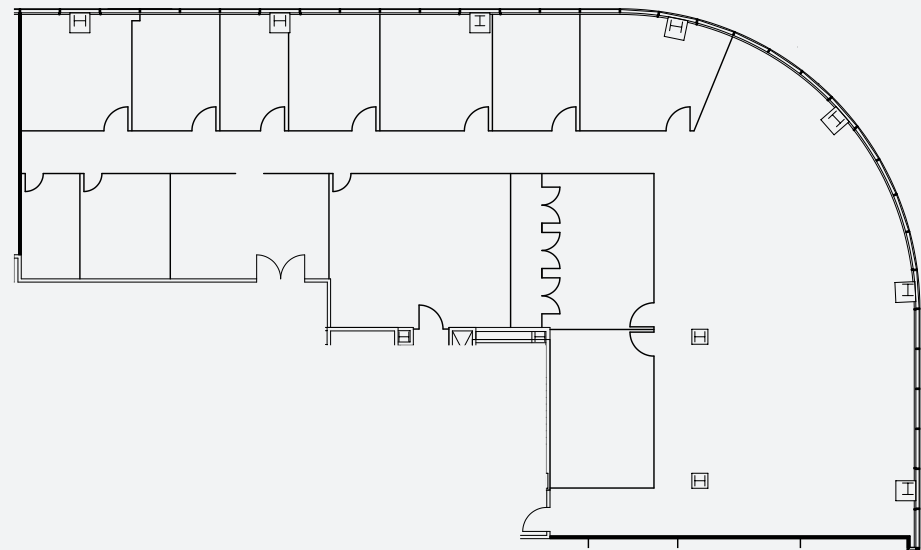




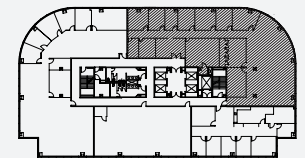
## 7755 Center Ave

SUITE 500  
6,172 SF

Double Door lobby entry, reception area, 7 private window offices, 1 private offices, conference room, storage and open work area.



KEY PLAN

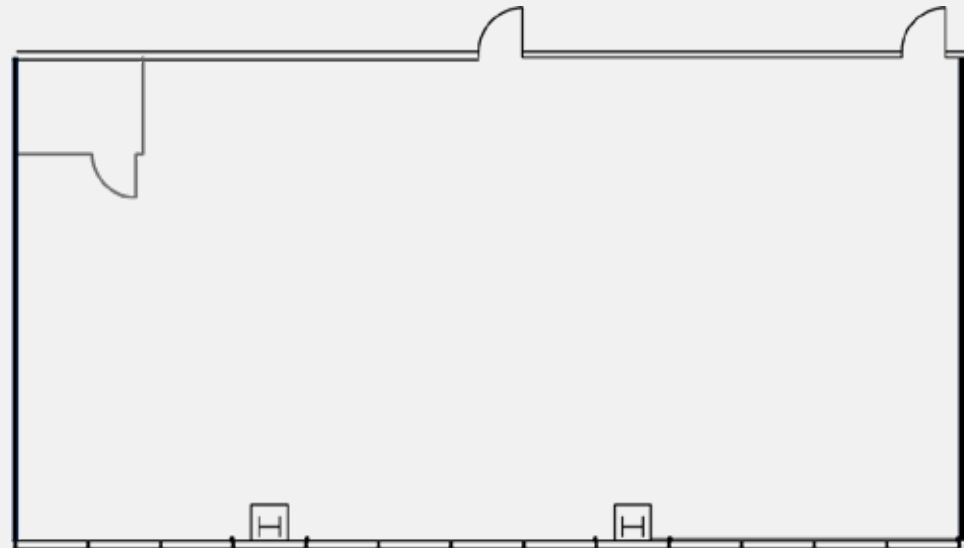




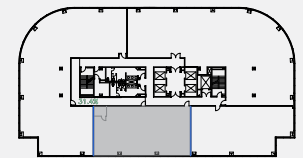
## 7755 Center Ave

SUITE 550  
2,752 SF

Available 9/1/2021, Call to Show: Description: Open plan, build to suit opportunity.



KEY PLAN

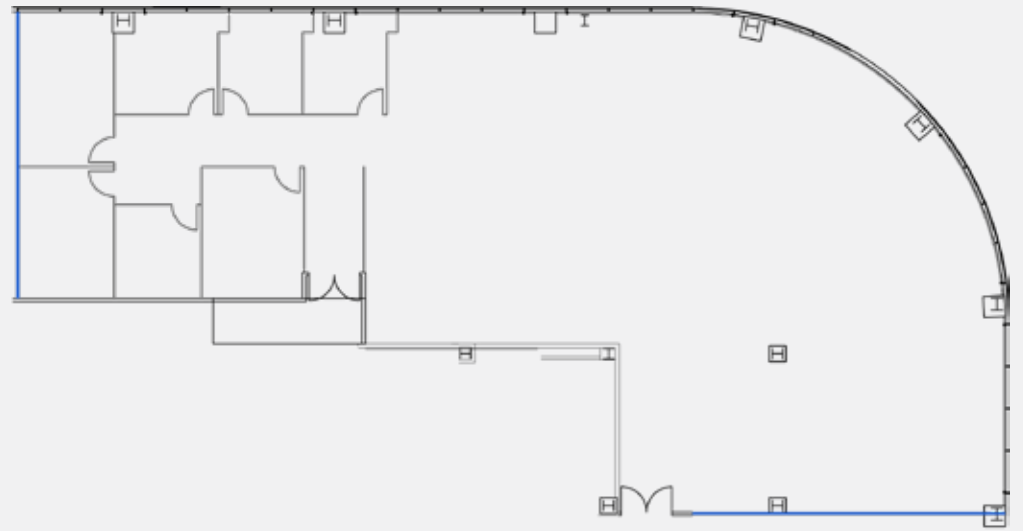




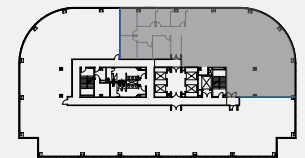
## 7755 Center Ave

SUITE 650  
6,068 SF

Call to Show: Mostly open plan with three (3) private offices, conference room, kitchen, work room & IT room.



KEY PLAN

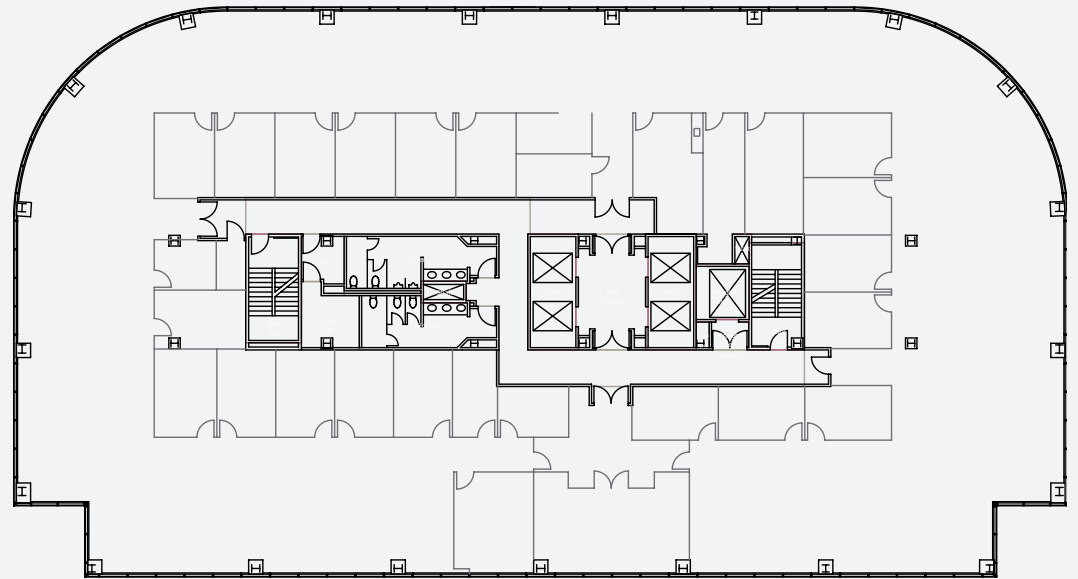




## 7755 Center Ave

SUITE 800  
17,537 SF

Call to Show: Nineteen (19) interior offices, large conference room, several smaller conference rooms, with large open work area, kitchen, workroom, storage & IT.

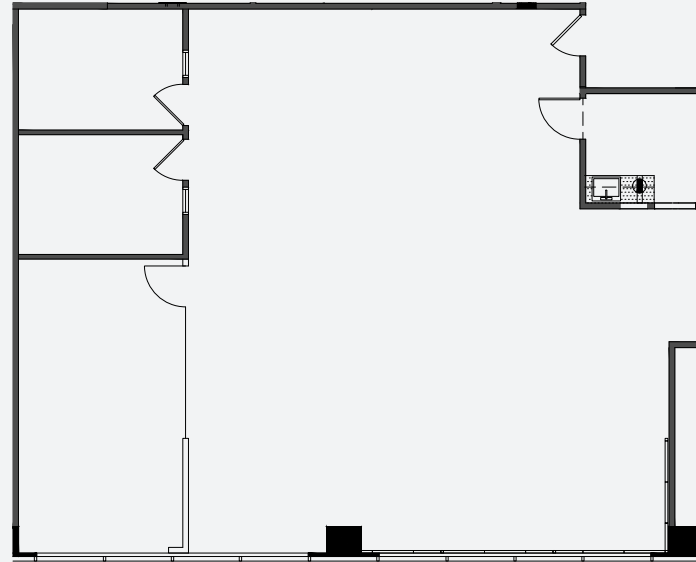




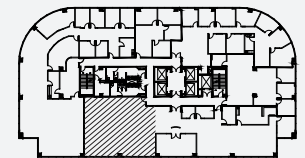
## 7755 Center Ave

SUITE 1060  
2,250 SF

Spectacular views with 2 private offices, large conference room kitchen/IT room and large open work area - Call to show.



KEY PLAN

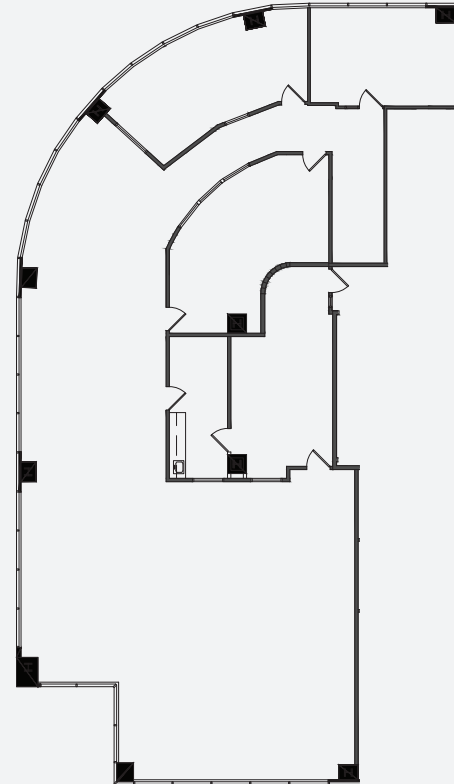




## 7755 Center Ave

SUITE 1070  
4,850 SF

1 window offices, 2 conference rooms, large open area  
with spectacular views - Call to show.



KEY PLAN

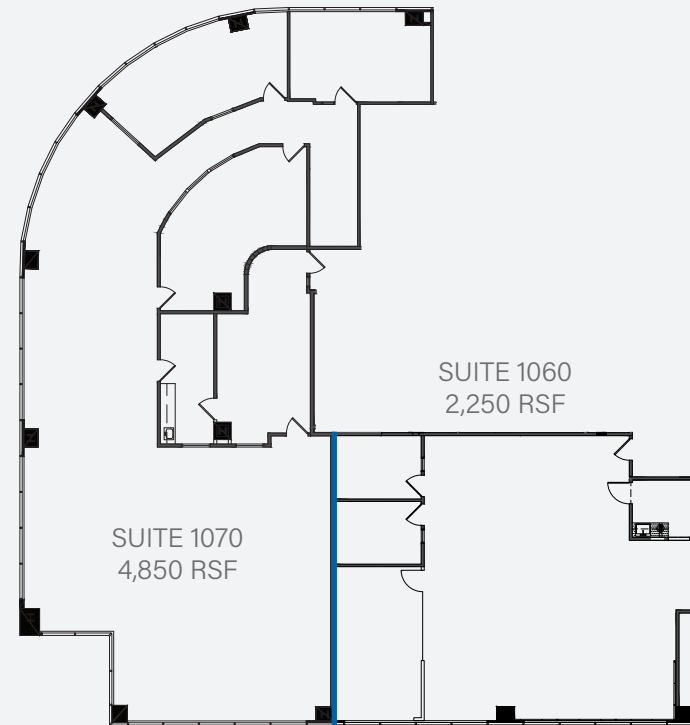




## 7755 Center Ave

SUITE 1060/1070  
7,100 SF

Contiguous space.



KEY PLAN

