

KEY PLAN

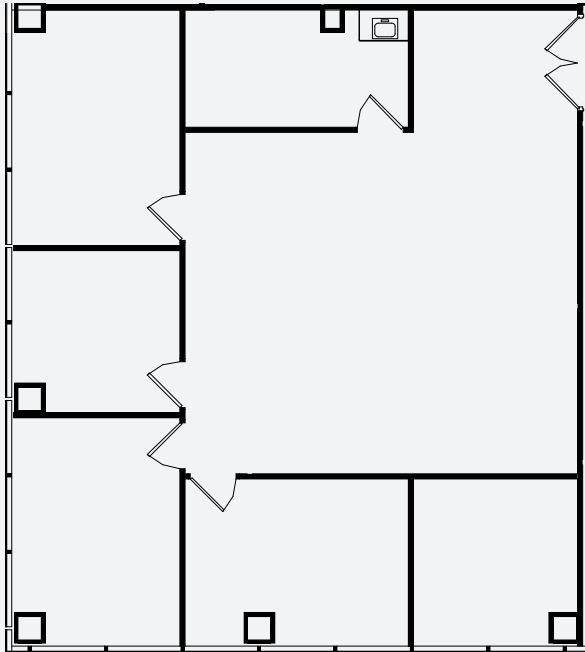


## 7777 Center Ave

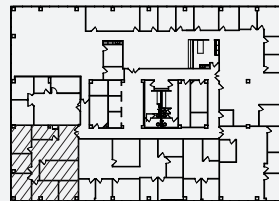
SUITE 100

4,662 SF

Highly visible ground floor space, with glass double-door entry immediately off the lobby. High ceilings & ample glass line. Open reception, glass conference room, 3 window offices, open break room/kitchen, copy/storage/work room, and large open work area.



KEY PLAN

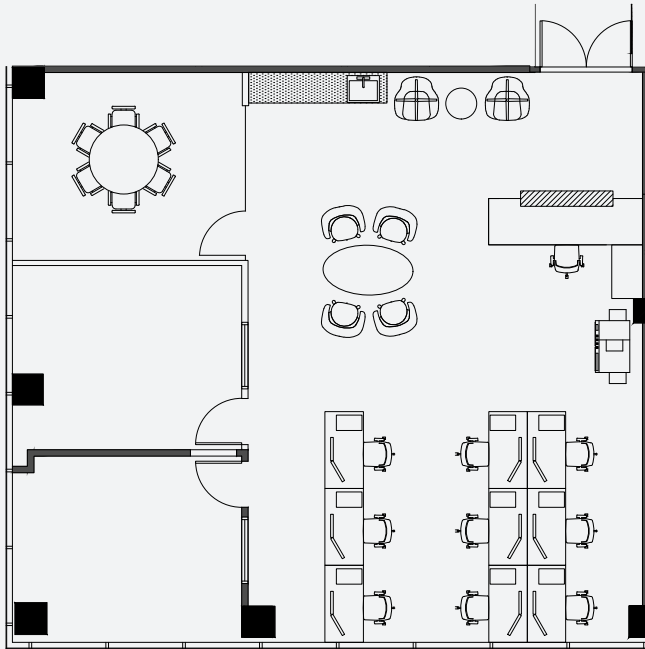


## 7777 Center Ave

SUITE 210

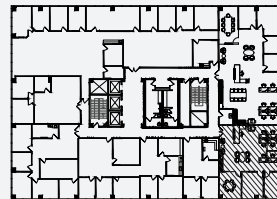
1,914 SF

Double door entry with conference room, four perimeter offices, break room and open area.



Note: Furniture not available

KEY PLAN

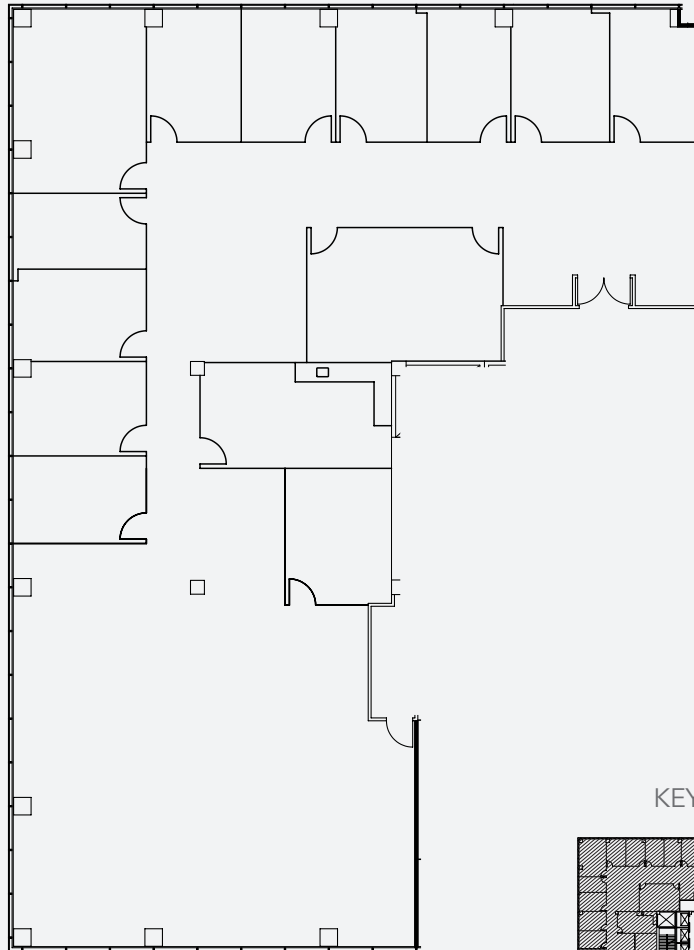


## 7777 Center Ave

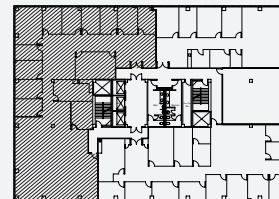
SUITE 260

1,857 SF

Turnkey spec suite, corner location with double door entry, 2 window offices, conference room (or additional office), open kitchen, and large open work area.



KEY PLAN

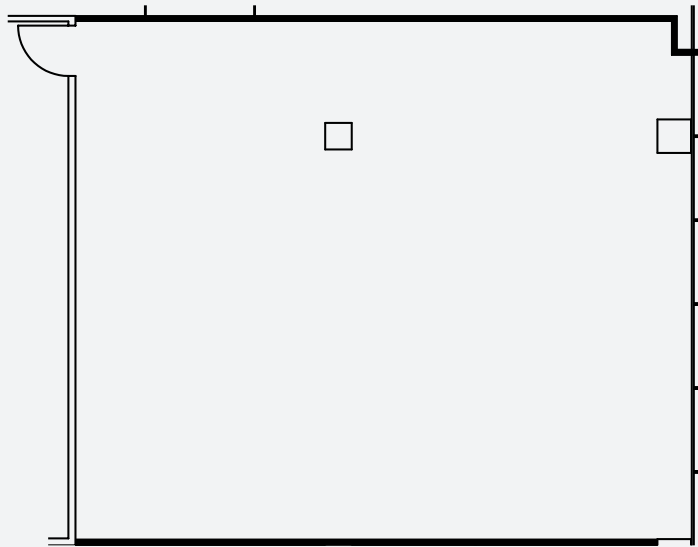


## 7777 Center Ave

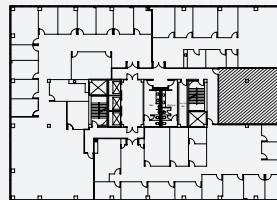
SUITE 300

7,294 SF

Double door entry off elevator featuring large conference room, perimeter offices, break area, work room and large open area.



KEY PLAN

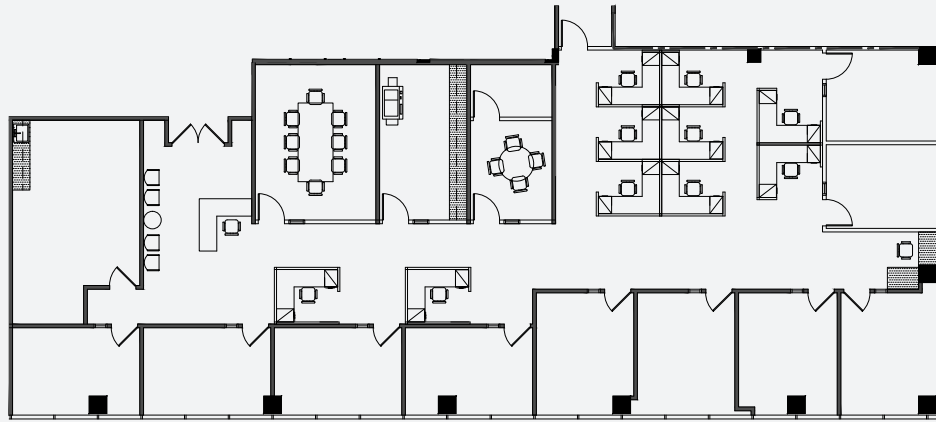


## 7777 Center Ave

SUITE 330

1,436 SF

Improvements to suit.



KEY PLAN



## 7777 Center Ave

SUITE 350

5,246 SF

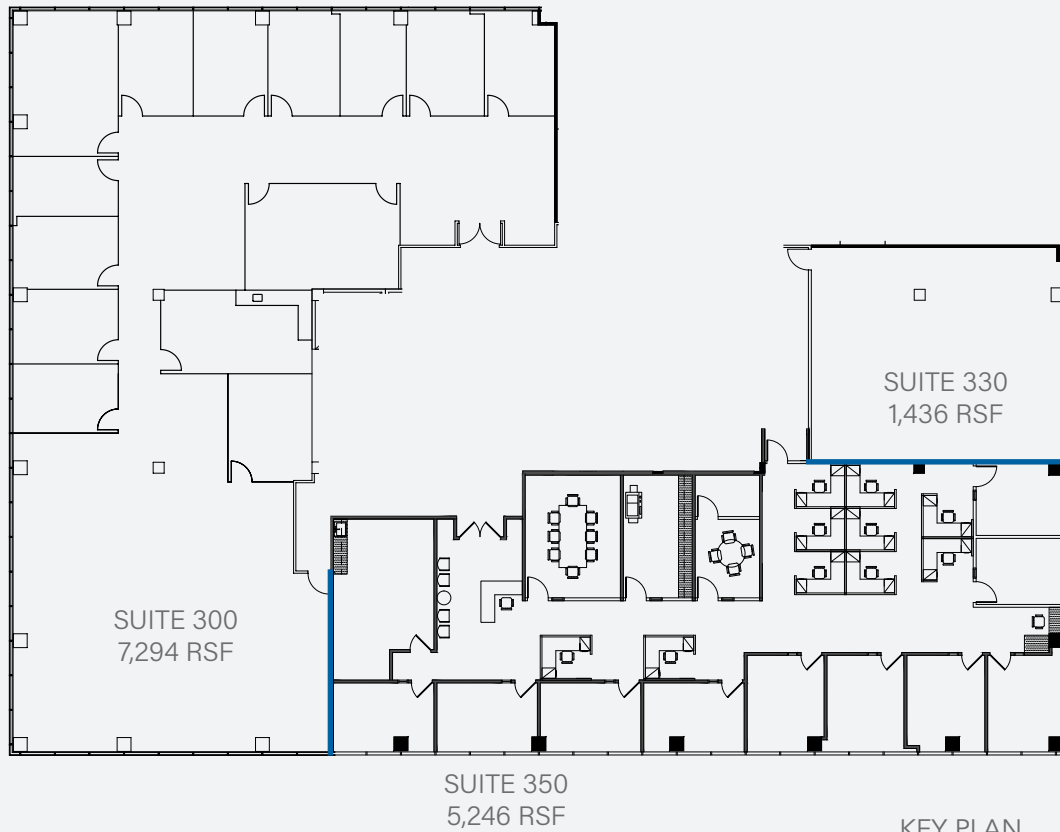
Double door lobby exposure w/ reception area. Conference room, (10) window offices, small conference room, IT, work/storage room, break room and open area for workstations.



## 7777 Center Ave

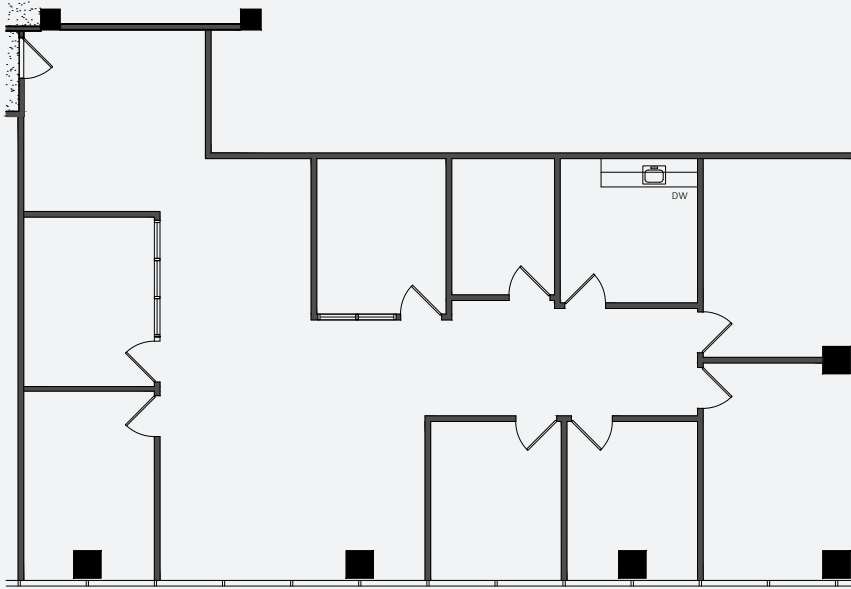
SUITE 300/330/350  
13,976 SF

Contiguous space.

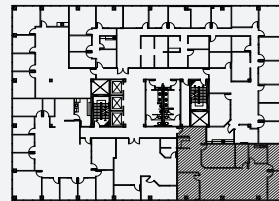


KEY PLAN





KEY PLAN



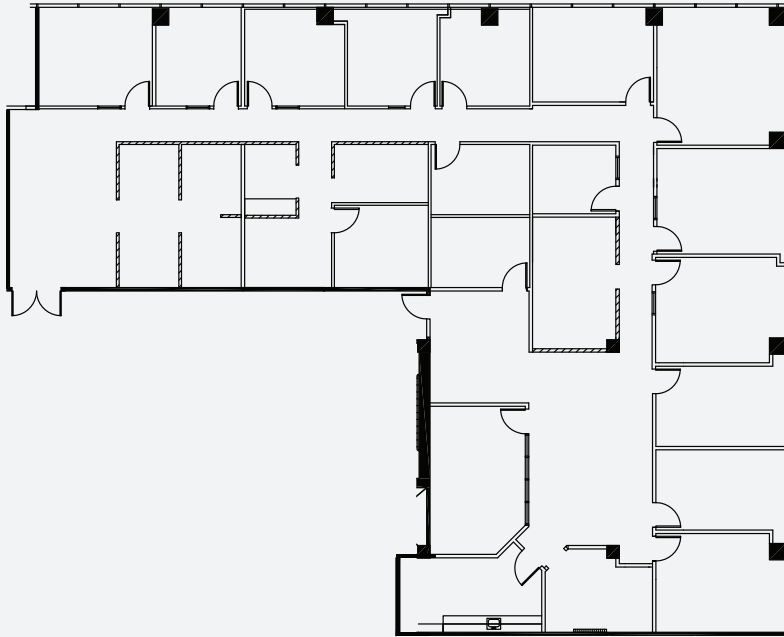
## 7777 Center Ave

SUITE 430

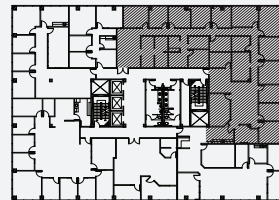
2,531 SF

Corner space with ample window line, 3 perimeter offices, conference room, kitchen, storage and open area for workstations.





KEY PLAN

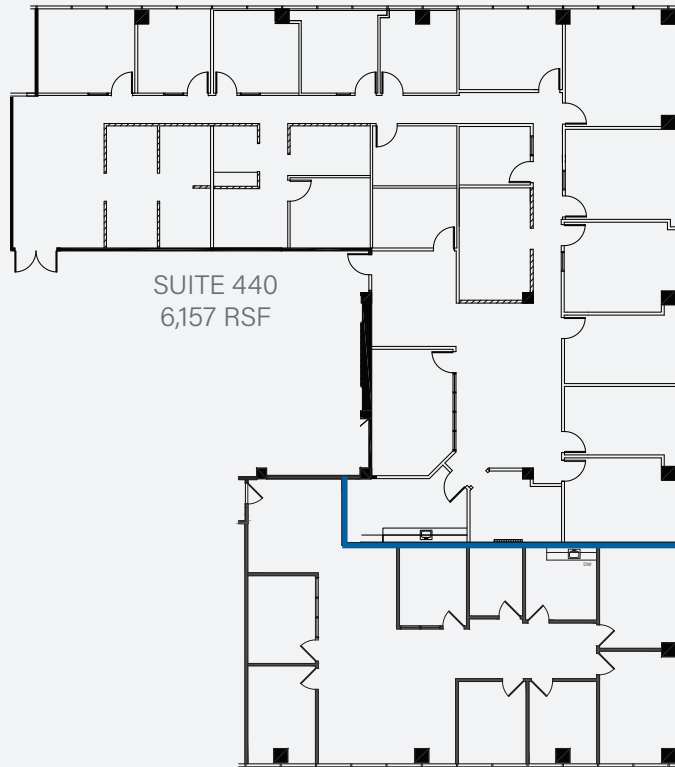


## 7777 Center Ave

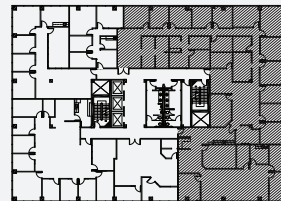
SUITE 440

6,157 SF

Double door entry, 11 window offices, conference rooms, 4 interior offices, storage/work room, kitchen and open work area. Call to show.



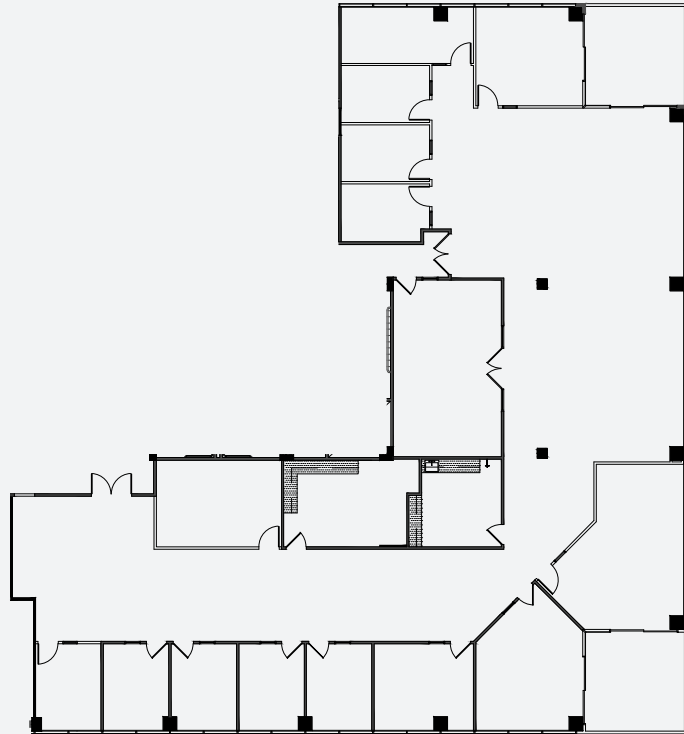
KEY PLAN



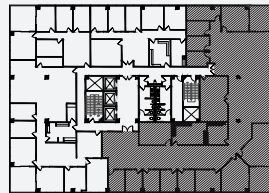
## 7777 Center Ave

SUITE 430/440  
8,688 SF

Contiguous space.



KEY PLAN

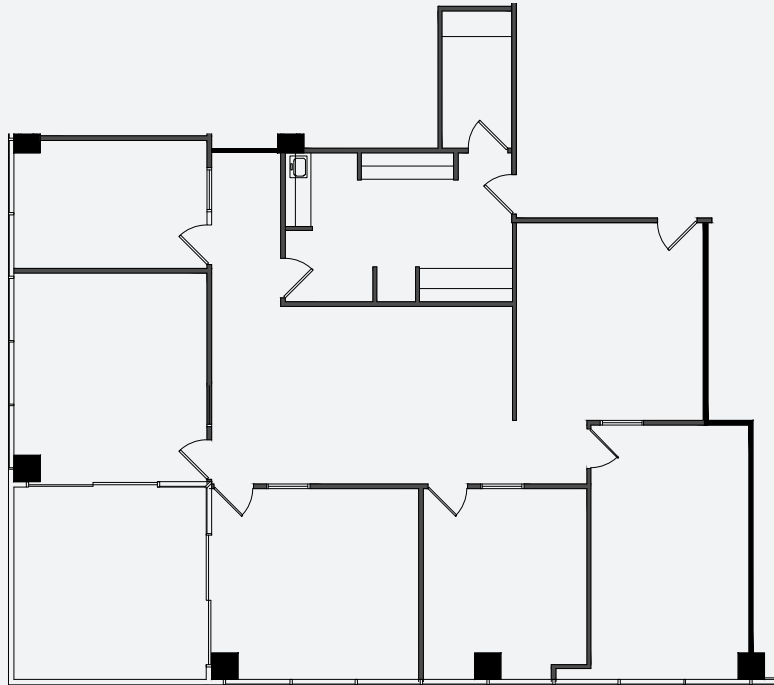


## 7777 Center Ave

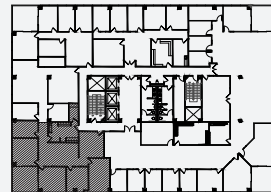
SUITE 600

8,408 SF

Double door lobby entry with 2 private patios, reception area, 7 window offices, 3 interior offices, 4 conference rooms, work/copy room, kitchen/break room and open area for workstations.



KEY PLAN

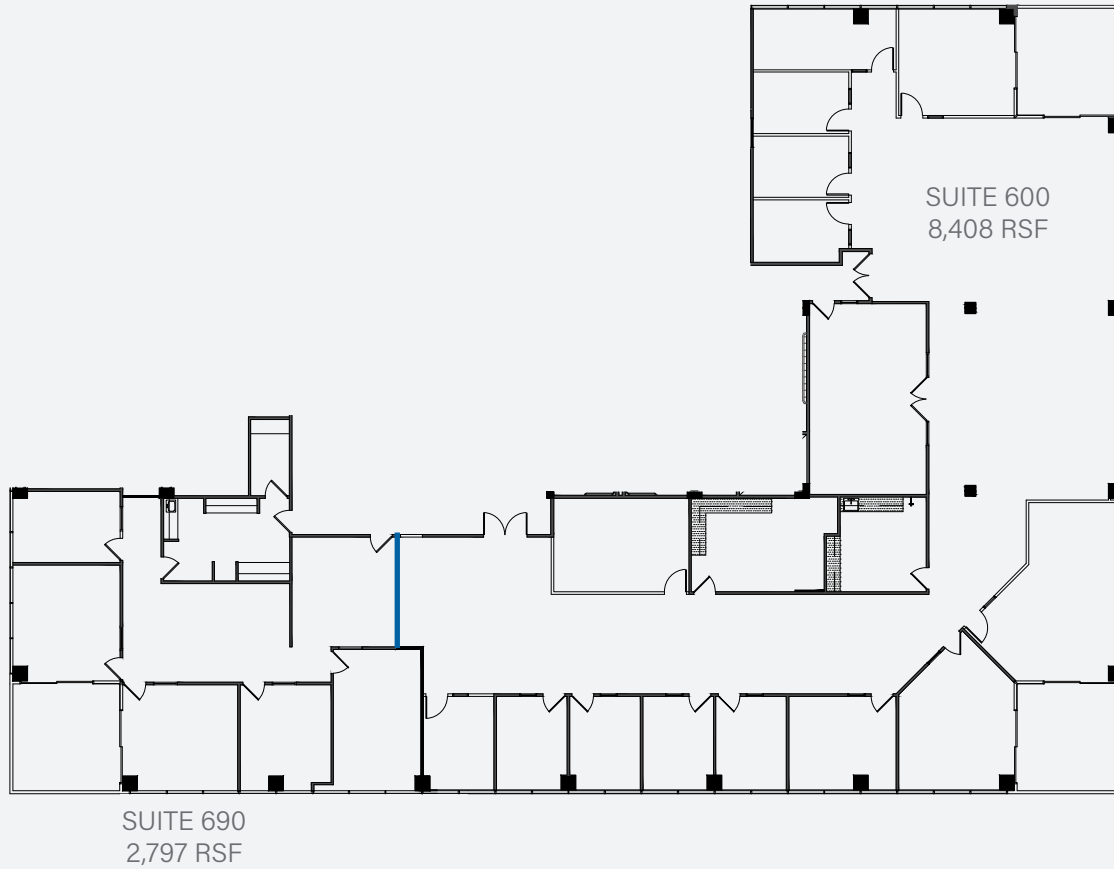


## 7777 Center Ave

SUITE 690

2,797 SF

Reception area, 4 private offices, kitchen/work room, IT closet, and small open work area.



## 7777 Center Ave

600/690

11,205 SF

Contiguous space.