

THE
GATEWAY AT
WYNWOOD

A HIGH VISIBILITY **RETAIL LOCATION** AT ONE OF THE

**BUSIEST
INTERSEC-
TIONS**

IN MIAMI FLORIDA



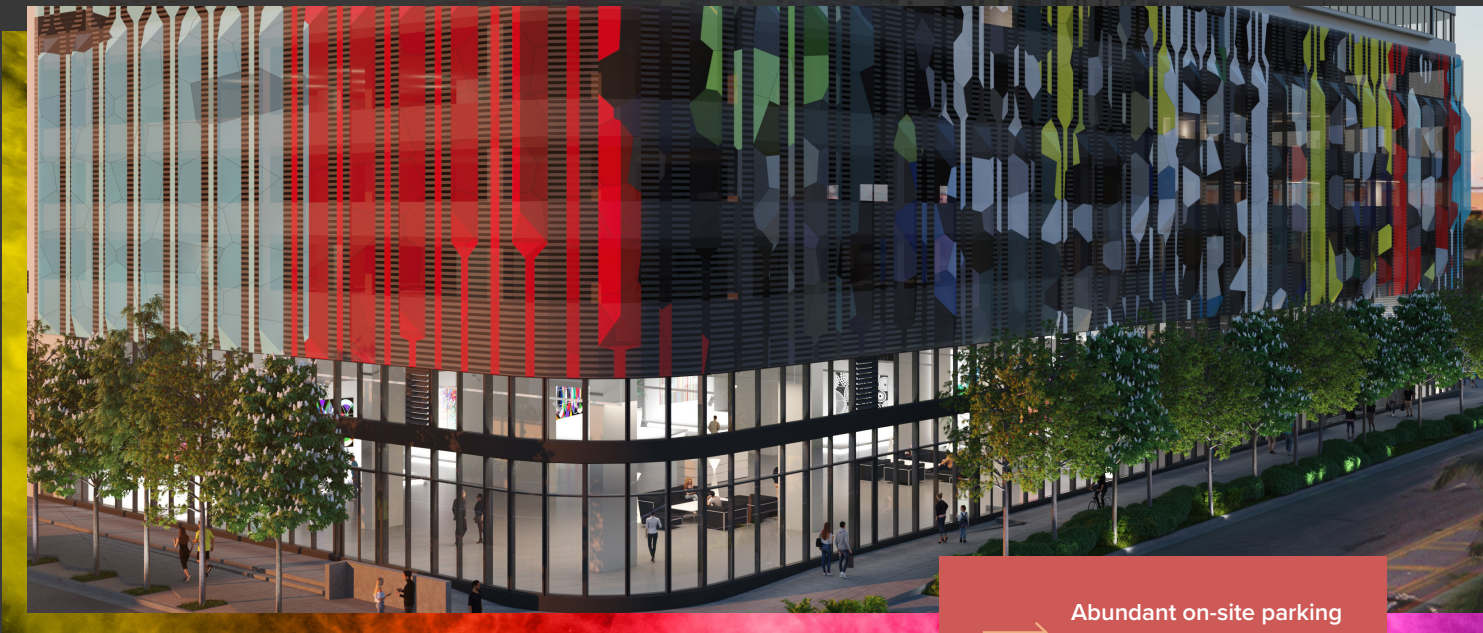
2916 North Miami Ave. Miami, FL 33127

CBRE

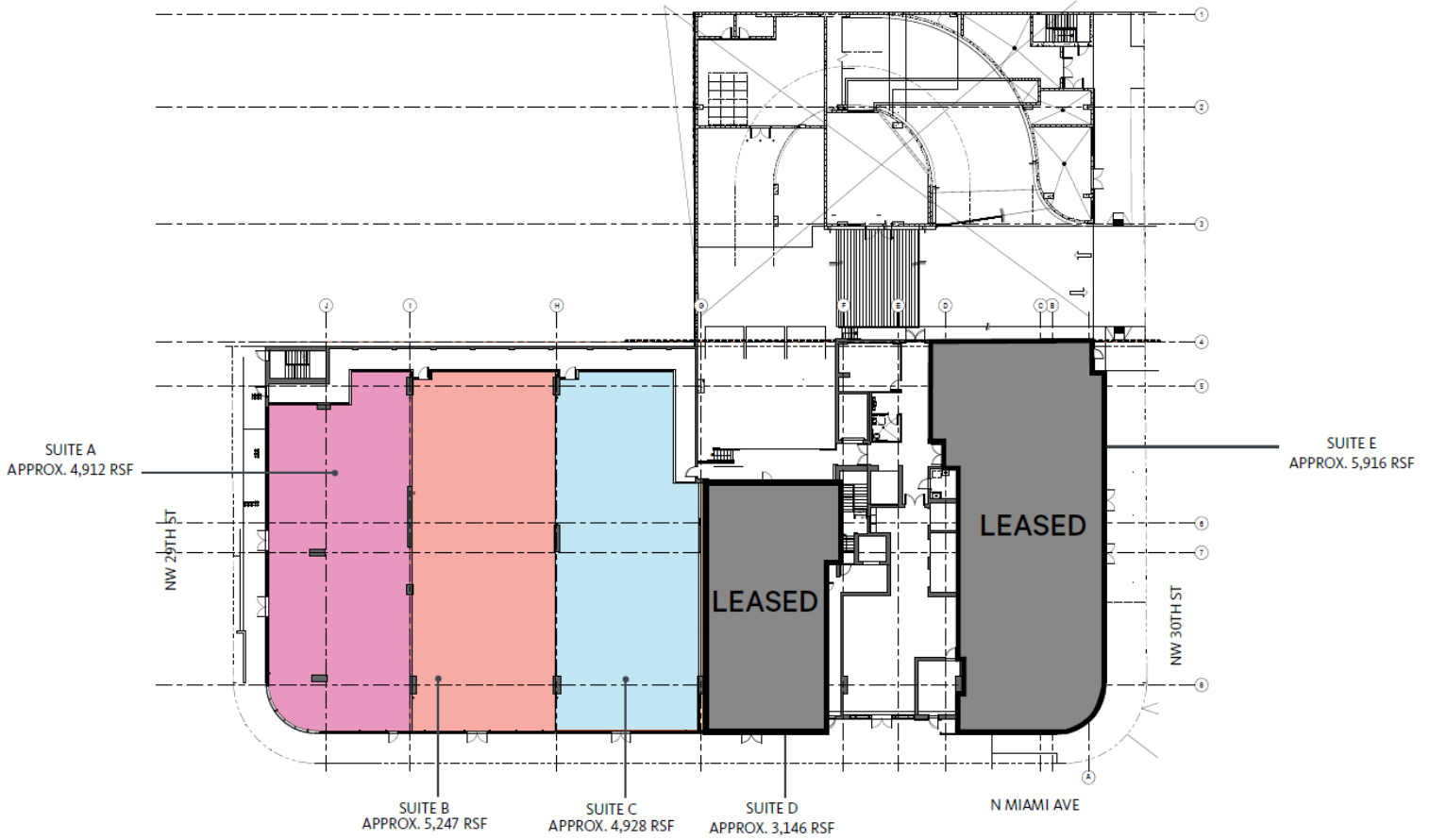
WYNWOOD

STARTS HERE

- + Retail opportunity totaling $\pm 24,041$ SF with flexible divisions for multiple users
- + High visibility retail location at one of the busiest intersections in Miami
- + Term: Negotiable
- + New construction
- + Strategically located to draw from Design District, Midtown and Wynwood
- + Eight floors of creative office space above totaling $\pm 183,990$ SF
- + 20 foot ceiling heights on the Ground Floor and higher in some areas
- + Chase Bank just opened across the street



Abundant on-site parking for retail tenants



TOTAL OF ±24,041 RSF - CAN BE COMBINED

SURROUNDING RETAILERS



WARBY PARKER



west elm



- + Amati Furniture
- + Bat Louie
- + BEAKER & GRAY
- + Brasserie Azur
- + Bar SPANGLISH
- + R House
- + Sugarcane
- + Tap 42
- + The Cheese Course
- + VEZA SUR BREWING







36.7 Median Age



±2M SF Retail & ±3M SF Office
in Development



±1M New Residential Units



THE
GATEWAY AT
WYNWOOD



CONTACT THE

LEASING TEAM

DREW SCHAUL

Senior Vice President

+1 305 742 5112

drew.schaul@cbre.com

CBRE | Licensed Real Estate Broker

ALEX CESAR

First Vice President

+1 305 381 6431

alex.cesar@cbre.com

PAUL GROSSMAN

Senior Vice President

+1 617 894 4313

paul.grossman@cbre.com

© 2021 CBRE, Inc. All rights reserved. This information has been obtained from sources believed reliable, but has not been verified for accuracy or completeness. You should conduct a careful, independent investigation of the property and verify all information. Any reliance on this information is solely at your own risk. CBRE and the CBRE logo are service marks of CBRE, Inc. All other marks displayed on this document are the property of their respective owners. Photos herein are the property of their respective owners. Use of these images without the express written consent of the owner is prohibited.

CBRE