

A NEW EXPERIENCE  
**HAS ARRIVED**

---

ONE20

E. BALTIMORE

**CBRE**



STUNNING CITY & HARBOR VIEWS

SUITES FROM 1,000 – 23,432 SF

ONE 20  
E. BALTIMORE

## STATE-OF-THE-ART UPGRADES



NEW LOBBY, COMMON  
AREAS, AND RESTROOMS



UPGRADED  
ELEVATORS



FULL REMODEL  
OF NALLEY FRESH

## BUILDING AMENITIES

- + Amazing views of Baltimore & The Inner Harbor
- + Simpli Concierge
- + New fitness center with dedicated restrooms, lockers and showers
- + 24/7 security
- + Access to shared conference center
- + Secured bike storage within garage – security camera monitoring
  - + Onsite Property Management
  - + Truist Bank and ATM
  - + Nalley Fresh
- + 250 parking spaces in building garage with 24/7 operation and direct lobby access





ONE20  
E. BALTIMORE

 CLICK FLOORS  
TO SEE AVAILABILITY!

SPECTACULAR **VIEWS**



CBRE





ONE20  
E. BALTIMORE



IT'S ALL WITHIN REACH



97

WALKABILITY SCORE



- + Adjacent to Mass Transit
- + Easy access to I-395, I-95, Rt. 295 and I-83



2 MINUTE WALK

5-8 MINUTE WALK



# AREA AMENITIES

## DINING

1. B&O American Brasserie
2. Tell Tale Restaurant
3. 17 Light Restaurant
4. Starbucks
5. R&R Taqueria
6. Kona Grill
7. Cosi
8. Rosina Gourmet
9. South Street Deli
10. Cheesecake Factory
11. Nalley Fresh
12. The Center Club
13. Chick-Fil-A
14. Shake Shack
15. Subway
16. HoodFellas
17. Potbelly
18. Au Bon Pain
19. Werner's Diner and Pub
20. The Water Street Tavern & Key West Patio Bar
21. Morton's The Steakhouse
22. Bistro 300
23. Watertable
24. The Halal Guys
25. Zander's
26. Quench Juice Bar
27. Peter's Pour House
28. Supano's Restaurant
29. Dunkin
30. Pitamore Restaurant and Catering
31. LB Skybar
32. LB Bistro & Bakery
33. Young's Deli

## CONVENIENCES

35. Walgreens Pharmacy
36. CVS
37. Royal Farms
38. 7-Eleven
39. FedEx Drop Box
40. FedEx Office Print & Ship Center
41. FedEx Drop Box
42. The UPS Store
43. Tower Cleaners

## HOTELS

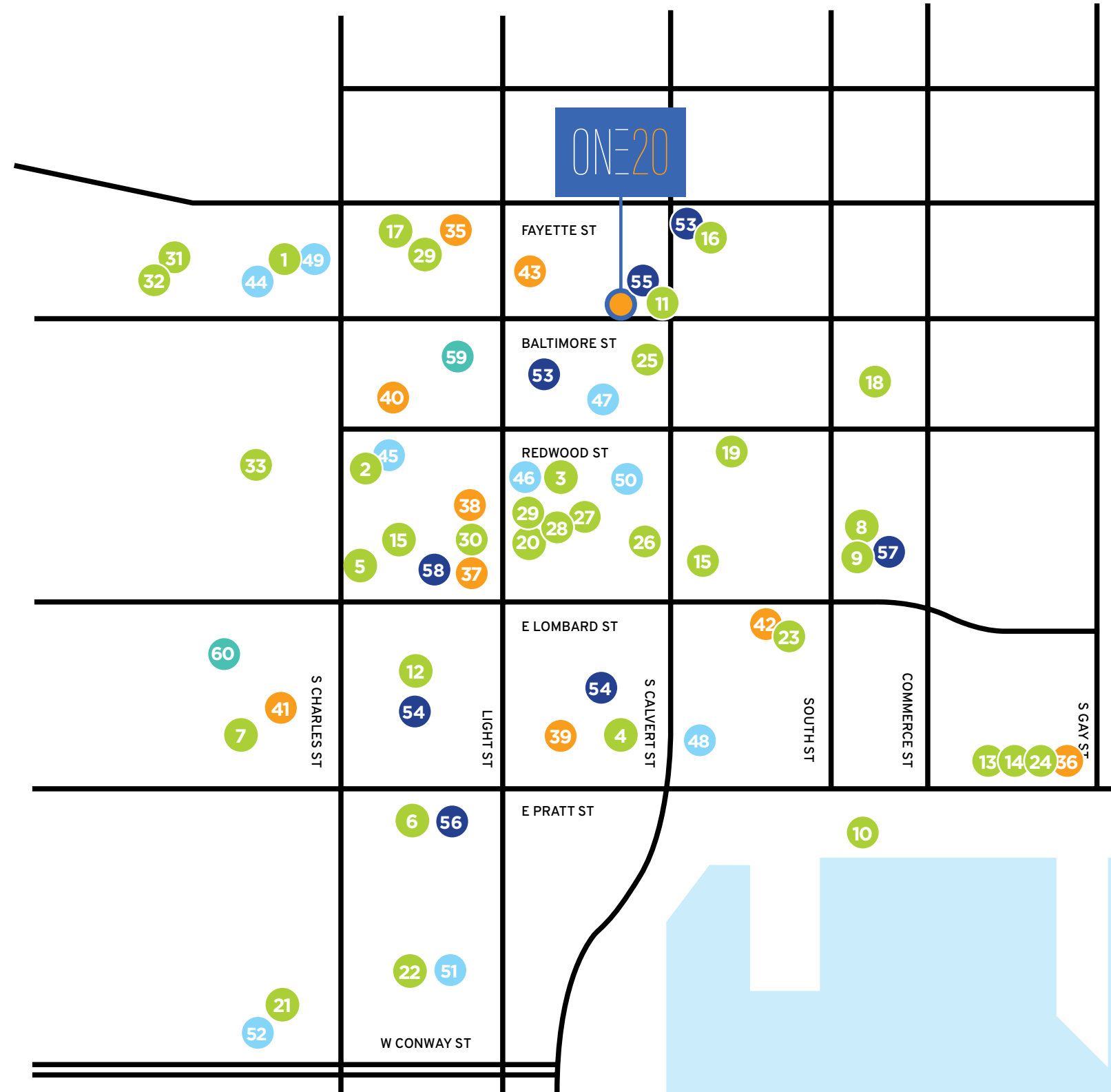
44. Lord Baltimore
45. Delta Hotel
46. Residence Inn by Marriott Baltimore
47. SpringHill Suites by Marriott Baltimore
48. Renaissance Baltimore Harborplace Hotel
49. Kimpton Hotel Monaco
50. Hampton Inn & Suites Baltimore Inner Harbor
51. Hyatt Regency
52. Sheraton Inner Harbor Hotel

## BANKS / ATM

53. M&T Bank
54. Wells Fargo
55. Truist Bank
56. PNC Bank
57. First National Bank
58. First National Bank ATM

## FITNESS

59. UA Performance Center
60. Planet Fitness



# ONE20

E. BALTIMORE

---

## FOR MORE INFORMATION:

**DAVID FIELDS**

+1 410 244 3130  
david.fields@cbre.com

**ADAM CERIBELLI**

+1 410 244 3175  
adam.ceribelli@cbre.com

**KEVIN WILLE**

+1 410 244 3148  
kevin.wille@cbre.com

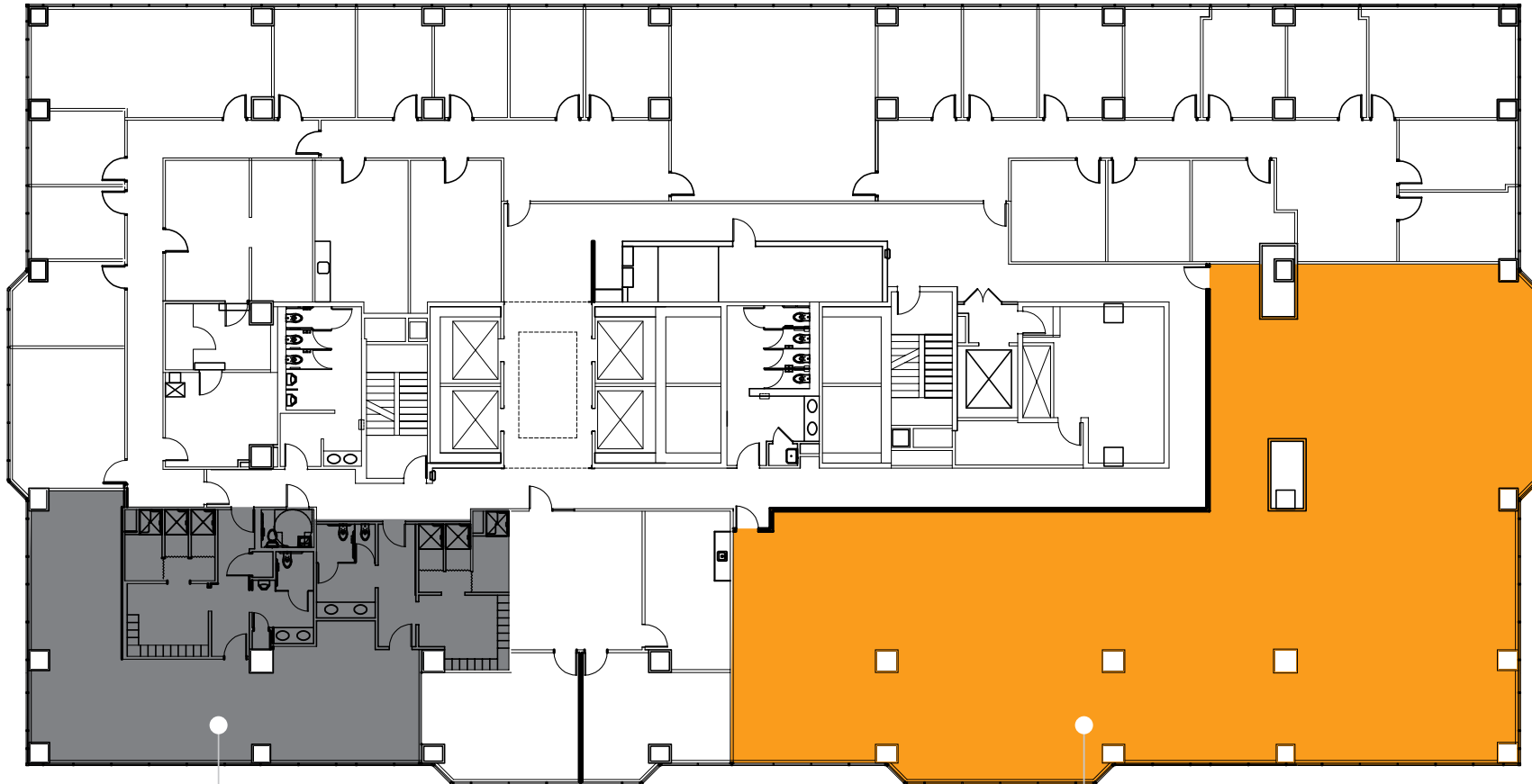
**JORDANA POLLACK**

+1 410 244 3111  
jordana.pollack@cbre.com

© 2022 CBRE, Inc. All rights reserved. This information has been obtained from sources believed reliable, but has not been verified for accuracy or completeness. You should conduct a careful, independent investigation of the property and verify all information. Any reliance on this information is solely at your own risk. CBRE and the CBRE logo are service marks of CBRE, Inc. All other marks displayed on this document are the property of their respective owners, and the use of such logos does not imply any affiliation with or endorsement of CBRE. Photos herein are the property of their respective owners. Use of these images without the express written consent of the owner is prohibited. PMStudio\_October2023

**CBRE**

# 8<sup>TH</sup> FLOOR



FITNESS CENTER

SUITE 860  
6,253 SRF

FOR MORE  
INFORMATION:

DAVID FIELDS  
+1 410 244 3130  
david.fields@cbre.com

KEVIN WILLE  
+1 410 244 3148  
kevin.wille@cbre.com

ADAM CERIBELLI  
+1 410 244 3175  
adam.ceribelli@cbre.com

JORDANA POLLACK  
+1 410 244 3111  
jordana.pollack@cbre.com



# 13<sup>TH</sup> FLOOR



FOR MORE  
INFORMATION:

**DAVID FIELDS**  
+1 410 244 3130  
david.fields@cbre.com

**KEVIN WILLE**  
+1 410 244 3148  
kevin.wille@cbre.com

**ADAM CERIBELLI**  
+1 410 244 3175  
adam.ceribelli@cbre.com

**JORDANA POLLACK**  
+1 410 244 3111  
jordana.pollack@cbre.com



# 17<sup>TH</sup> FLOOR



SUITE 1700  
14,117 SF

FOR MORE  
INFORMATION:

DAVID FIELDS  
+1 410 244 3130  
david.fields@cbre.com

KEVIN WILLE  
+1 410 244 3148  
kevin.wille@cbre.com

ADAM CERIBELLI  
+1 410 244 3175  
adam.ceribelli@cbre.com

JORDANA POLLACK  
+1 410 244 3111  
jordana.pollack@cbre.com



# 18<sup>TH</sup> FLOOR



SUITE 1808  
2,098 RSF

SUITE 1860  
1,097 RSF

FOR MORE  
INFORMATION:

**DAVID FIELDS**  
+1 410 244 3130  
david.fields@cbre.com

**KEVIN WILLE**  
+1 410 244 3148  
kevin.wille@cbre.com

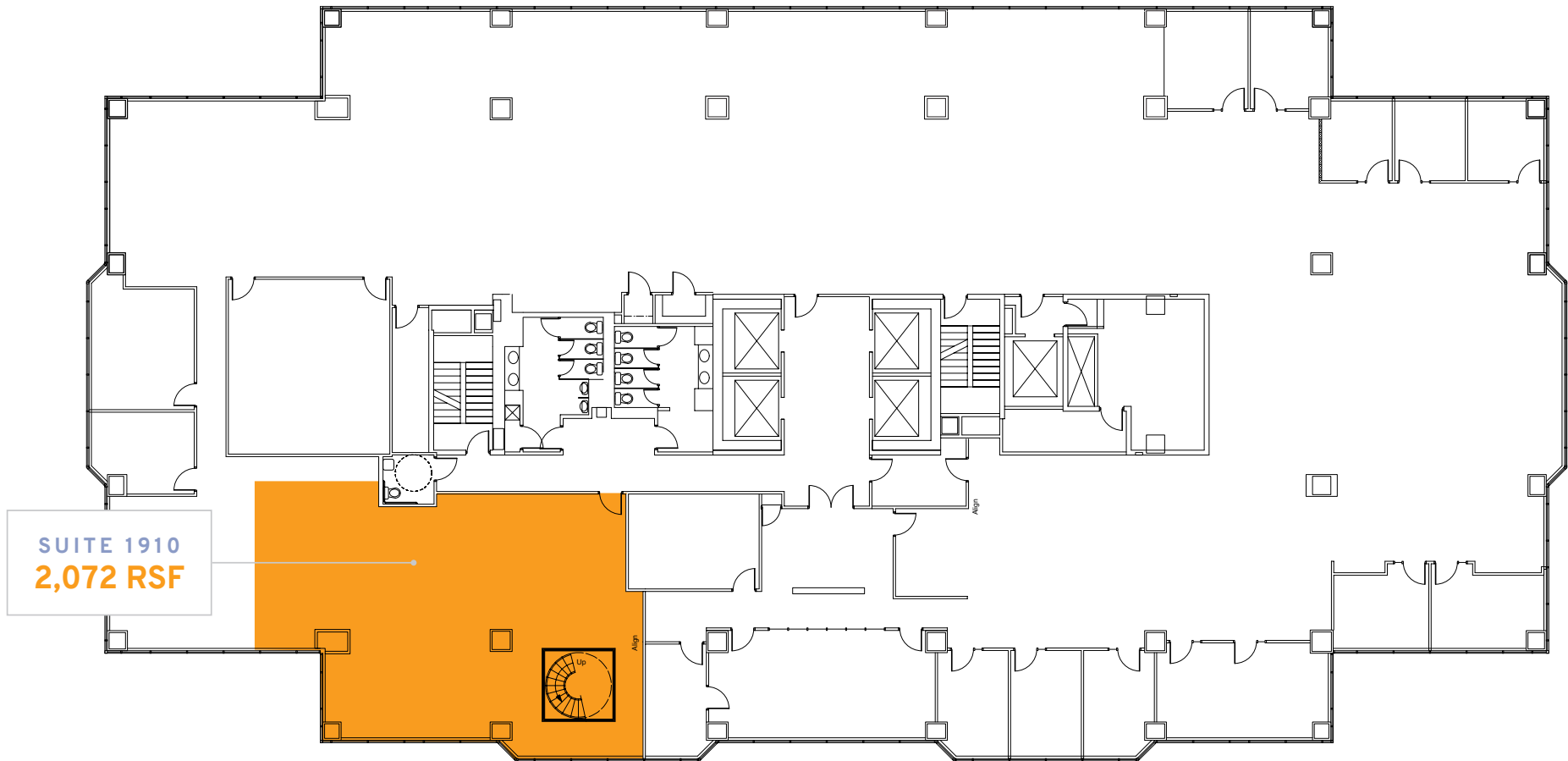
**ADAM CERIBELLI**  
+1 410 244 3175  
adam.ceribelli@cbre.com

**JORDANA POLLACK**  
+1 410 244 3111  
jordana.pollack@cbre.com





# 19<sup>TH</sup> FLOOR



SUITE 1910  
2,072 RSF

FOR MORE  
INFORMATION:

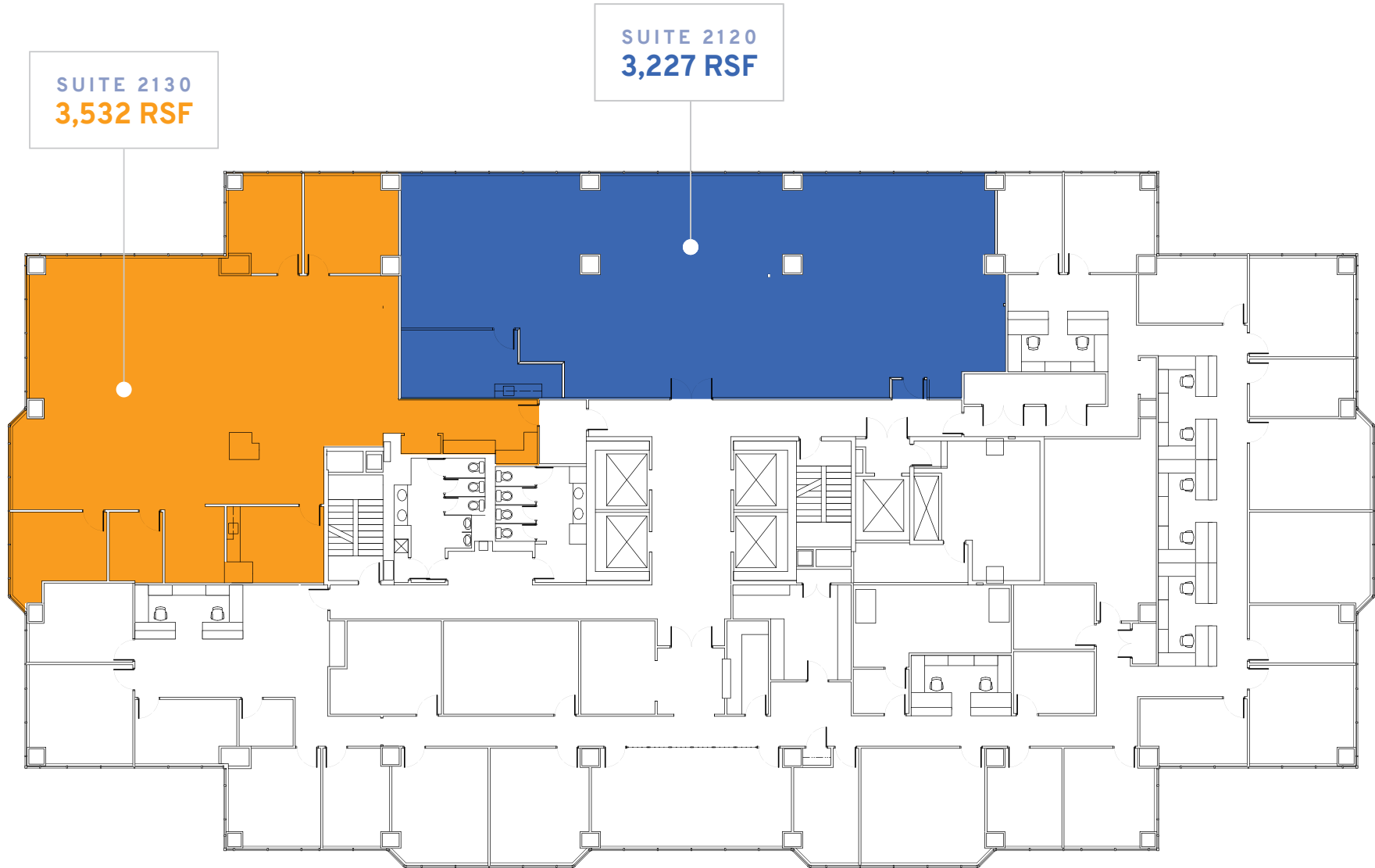
DAVID FIELDS  
+1 410 244 3130  
david.fields@cbre.com

KEVIN WILLE  
+1 410 244 3148  
kevin.wille@cbre.com

ADAM CERIBELLI  
+1 410 244 3175  
adam.ceribelli@cbre.com

JORDANA POLLACK  
+1 410 244 3111  
jordana.pollack@cbre.com

# 21<sup>ST</sup> FLOOR



FOR MORE  
INFORMATION:

**DAVID FIELDS**  
+1 410 244 3130  
david.fields@cbre.com

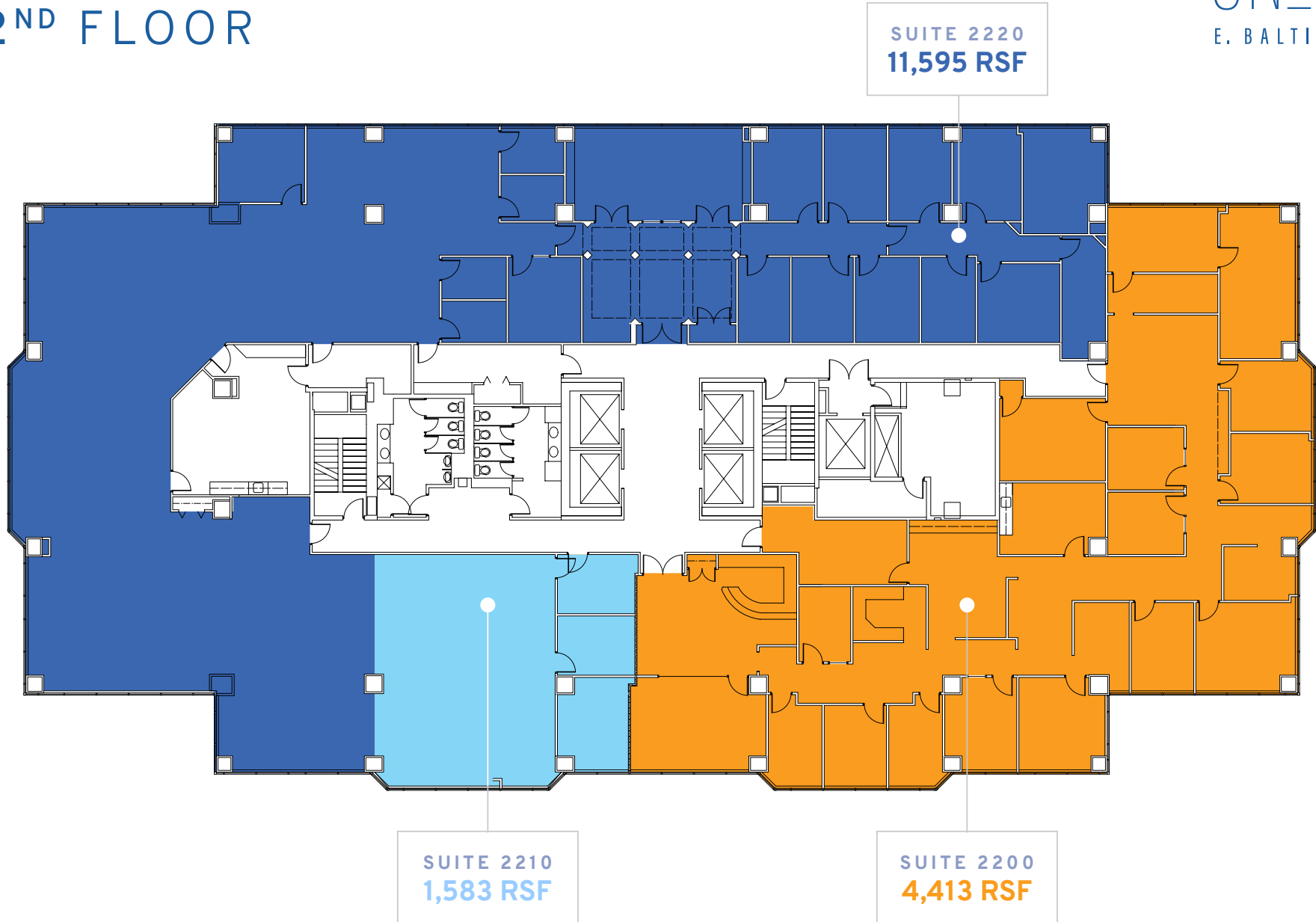
**KEVIN WILLE**  
+1 410 244 3148  
kevin.wille@cbre.com

**ADAM CERIBELLI**  
+1 410 244 3175  
adam.ceribelli@cbre.com

**JORDANA POLLACK**  
+1 410 244 3111  
jordana.pollack@cbre.com



# 22<sup>ND</sup> FLOOR



FOR MORE  
INFORMATION:

**DAVID FIELDS**  
+1 410 244 3130  
david.fields@cbre.com

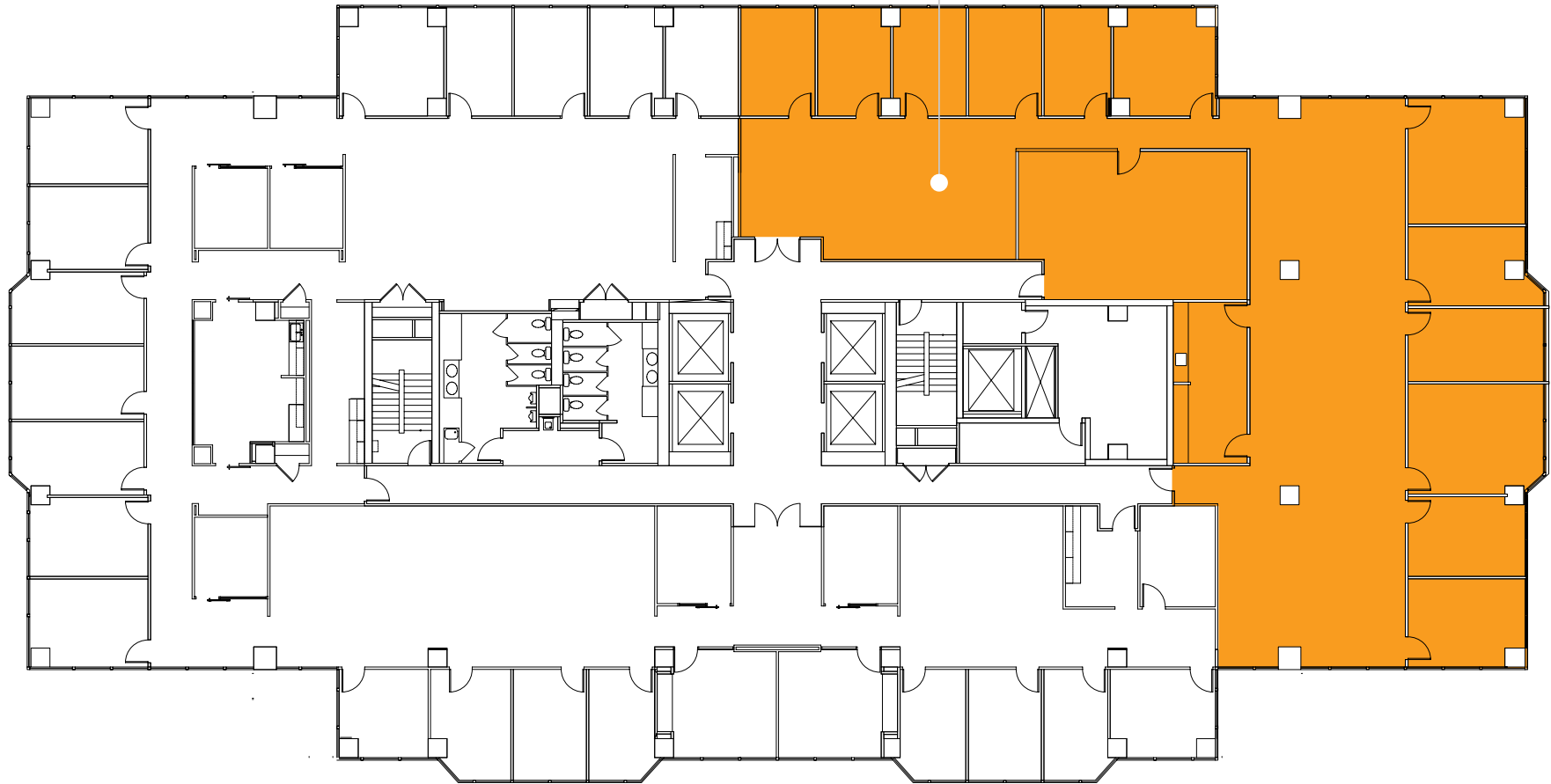
**KEVIN WILLE**  
+1 410 244 3148  
kevin.wille@cbre.com

**ADAM CERIBELLI**  
+1 410 244 3175  
adam.ceribelli@cbre.com

**JORDANA POLLACK**  
+1 410 244 3111  
jordana.pollack@cbre.com

# 24<sup>TH</sup> FLOOR

SUITE 2401  
6,296 RSF



FOR MORE  
INFORMATION:

**DAVID FIELDS**  
+1 410 244 3130  
david.fields@cbre.com

**KEVIN WILLE**  
+1 410 244 3148  
kevin.wille@cbre.com

**ADAM CERIBELLI**  
+1 410 244 3175  
adam.ceribelli@cbre.com

**JORDANA POLLACK**  
+1 410 244 3111  
jordana.pollack@cbre.com

