

15220, 15245, 15201, 15455, & A400
NW GREENBRIER PARKWAY
BEAVERTON, OR 97006



Cornell Oaks

CORPORATE CENTER



AVAILABLE FOR LEASE
MASTER PLANNED OFFICE/FLEX CAMPUS



VIEW OUR WEBSITE

CBRE

STRATEGICALLY LOCATED AT THE ENTRANCE OF THE SUNSET CORRIDOR

Consisting of 12 buildings with over 695,000 square feet. The campus has both multi-story class A office buildings as well as flex office buildings with exterior entrances and loading doors.





Cornell Oaks

CORPORATE CENTER

ON-SITE AMENITIES



On-site
Property Management



Walking & Bike
Paths on Campus



Coffee
Bar



New Amenity
Tenant Lounge



Fitness Facility with
Showers & Lockers
overlooking courtyard



Common Area
WiFi

ADJACENT PAD SITE AMENITIES



Restaurants



Hotels



Daycare
Facility



Fitness
Center



Gas
Station

AVAILABILITIES



WATERSIDE

15245 NW Greenbrier Pkwy
Total Building Size: 126,496 SF

BUILDING NUMBER	SUITE	±SF
14908D	14908D	11,005

PARKSIDE

A400 NW Greenbrier Pkwy
Total Building Size: 158,648 SF

BUILDING NUMBER	SUITE	±SF
A400	A100	127,147 divisible

HEARTWOOD

15220 NW Greenbrier Pkwy
Total Building Size: 171,228 SF

BUILDING NUMBER	SUITE	±SF
15220	105	4,073
15220	180	7,314
15220	130	14,610
15220	200	37,563
15220	275	3,034
15220	340	6,206
15220	355	16,302
15220	350-360	4,117

THE COMMONS

15455 NW Greenbrier Pkwy
Total Building Size: 68,455 SF

BUILDING NUMBER	SUITE	±SF
15455	135	1,740
15455	205	1,462
15455	220	9,310
15455	225	1,659
15455	230	1,021

RIDGEVIEW

15201 NW Greenbrier Pkwy
Total Building Size: 92,728 SF

BUILDING NUMBER	SUITE	±SF
15201	A1	27,441 divisible
15201	B1	7,090
15201	C6	5,380

SITE PLAN



Cornell Oaks

CORPORATE CENTER



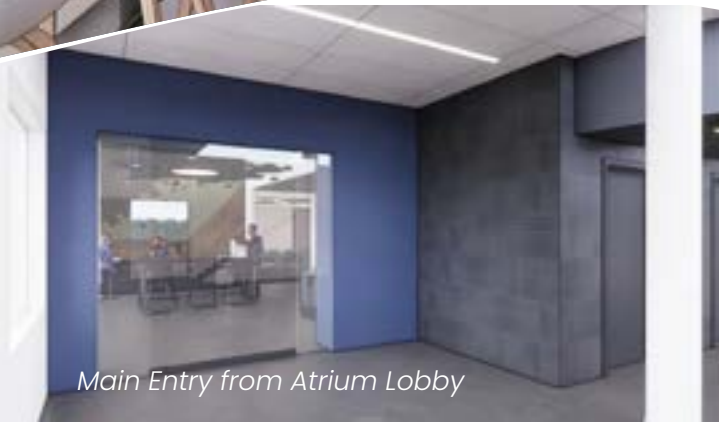
Waterside
Heartwood
Parkside
The Commons
Ridgeview

ON-SITE AMENITIES

New Amenity Lounge/Coffee Bar



Main Entry from Atrium Lobby



Remodeled Restrooms

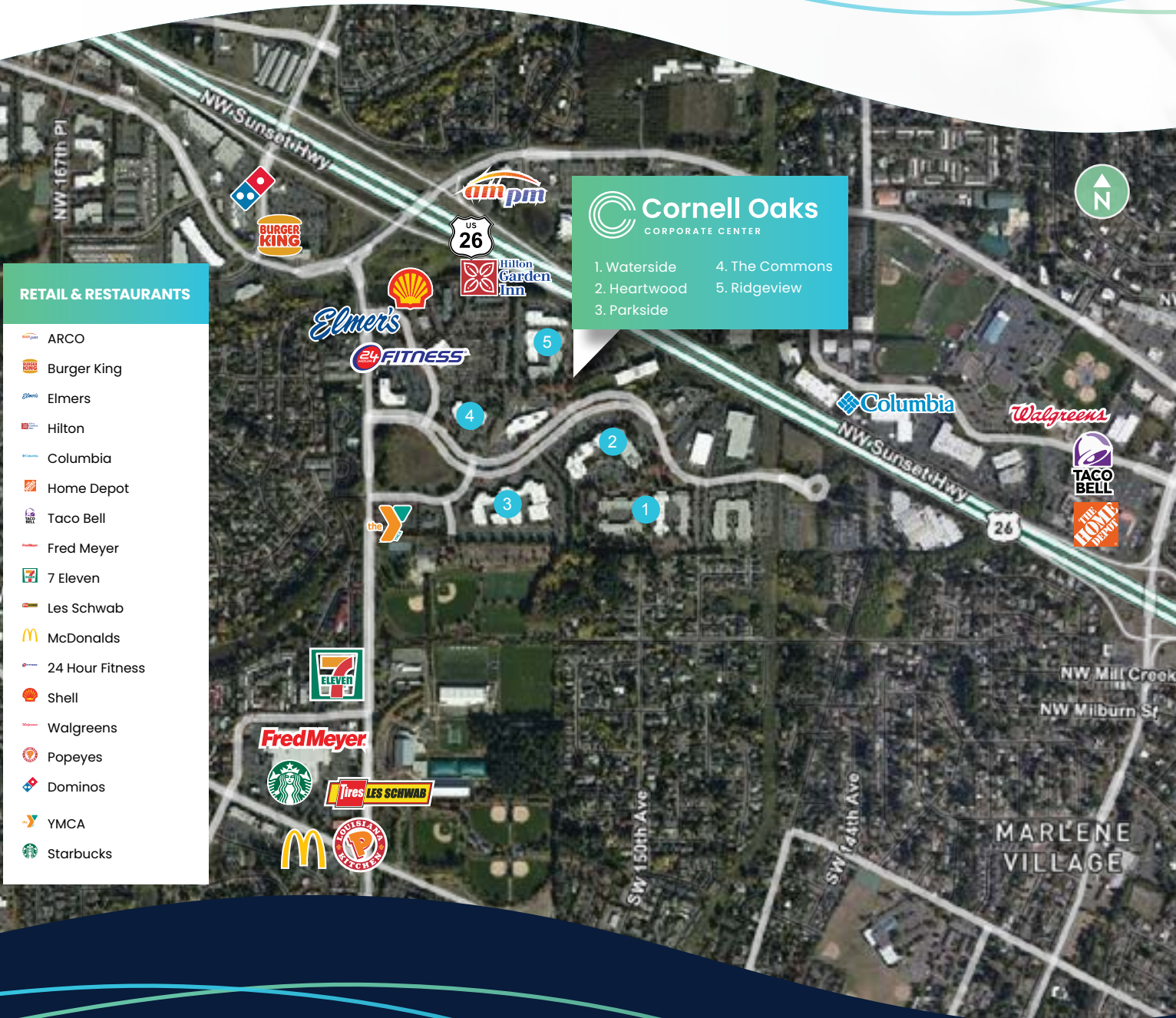


New Fitness Room



AMENITIES MAP

RETAIL & RESTAURANTS



DRIVE TIMES

1

MILE

To Tualatin Valley
Recreation Center

11

MILES

To Downtown
Portland



Cornell Oaks

CORPORATE CENTER

JOHN MEDAK

First Vice President

+1 503 221 4854

john.medak@cbre.com

Licensed in Oregon

JENNIFER MEDAK

First Vice President

+1 503 221 4853

jennifer.medak@cbre.com

Licensed in Oregon

© 2024 CBRE, Inc. All rights reserved. This information has been obtained from sources believed reliable, but has not been verified for accuracy or completeness. You should conduct a careful, independent investigation of the property and verify all information. Any reliance on this information is solely at your own risk. CBRE and the CBRE logo are service marks of CBRE, Inc. All other marks displayed on this document are the property of their respective owners, and the use of such logos does not imply any affiliation with or endorsement of CBRE. Photos herein are the property of their respective owners. Use of these images without the express written consent of the owner is prohibited.PMStudio_April2024

VISIT OUR WEBSITE

www.cornell-oaks-corporate-center.cbre-properties.com

CBRE