

FOR LEASE

SOUTH ALABAMA LOGISTICS PARK

MOBILE, ALABAMA

- **LARGEST MASTER-PLANNED INDUSTRIAL PARK IN THE SOUTHEAST** (1300 Acres)
- Over **6 MILLION SF** planned for Phase I
- Class A Warehouse / Distribution / Manufacturing Space Available
- Excellent Location with Immediate Access and Visibility to Interstate 10

NOW LEASING!

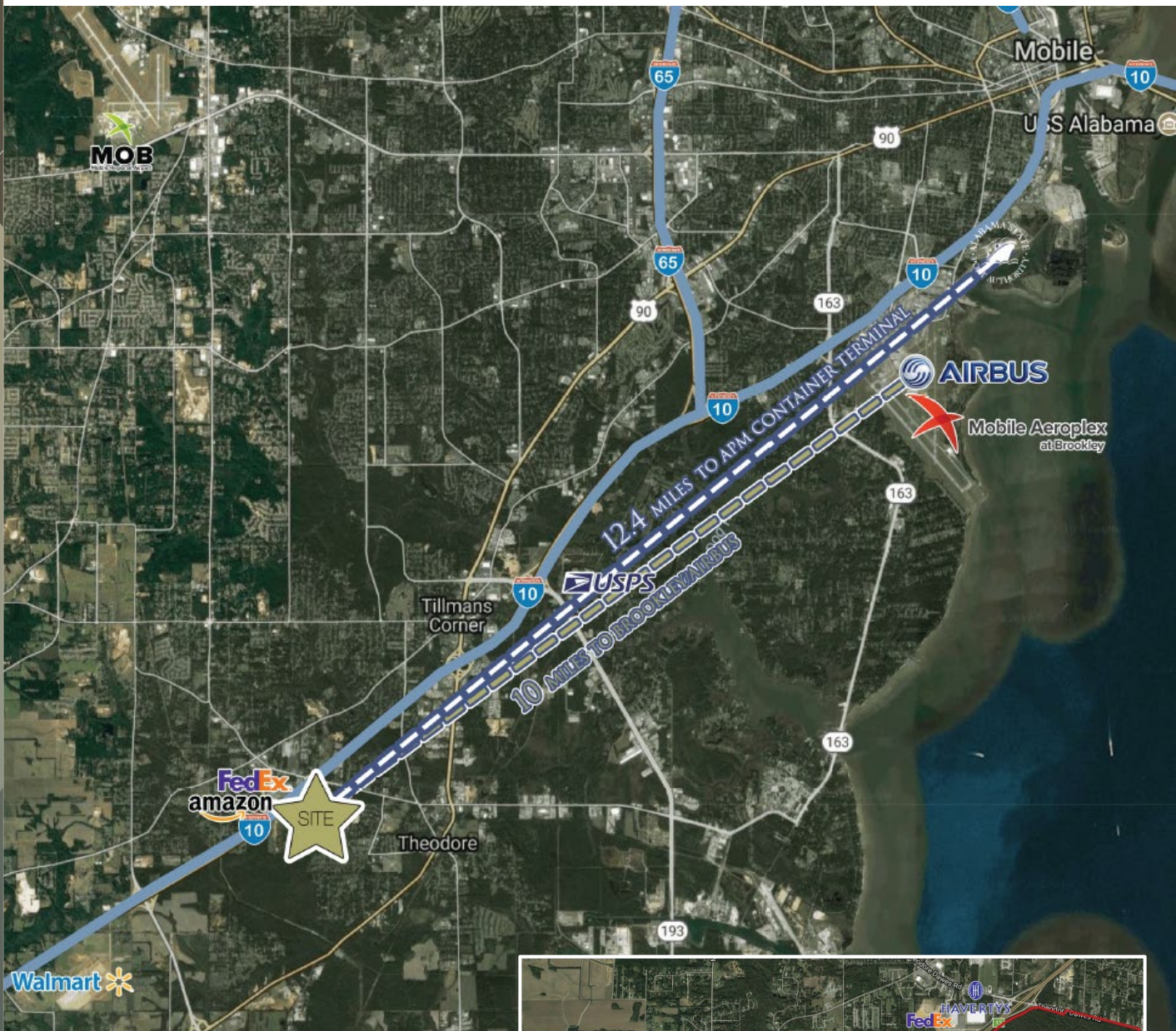


MASTER PLAN



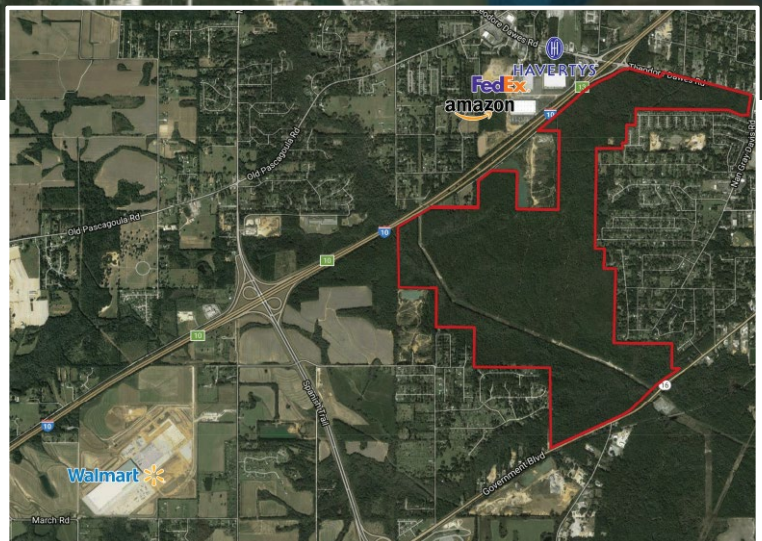
- Over **6 million SF** planned for Phase I
- Multiple layout options and sizes, starting as small as 80,000 SF
- Build-to-Suit options also available
- Class A Warehouse / Distribution space
- 32' clear height
- ESFR Sprinkler System
- Front load, rear load or cross-dock options

PRIME LOCATION



Mobile provides a unique infrastructure and numerous transportation options for local industries.

- 12.4 MILES to the container terminal at the newly expanded **Port of Mobile**
- 10 MILES to **Mobile Regional Airport** and **Mobile Aeroplex at Brookley**
- Easy access to **Interstate 65** with transportation routes in all directions



LOGISTICAL ADVANTAGES



- APM Terminals Mobile is a 140+ acre container and multi-user intermodal terminal
- APM Terminals and the AL State Port Authority have a \$525 Million Public-Private Partnership
- The Port of Mobile is less than 3 hours from open sea
- By 2024, the Port of Mobile's draft will deepen to 50 feet and widen to 600 feet, accommodating any vessel in the world

4 100-GAUGE
POST-PANAMAX
AND SUPER
POST-PANAMAX
SHIP-TO-SHORE
CRANES

ACCESS TO
15,000 MILES OF INLAND
WATERWAYS

WEEKLY CONTAINER
CARRIER-SERVICE
TO DESTINATIONS WORLDWIDE

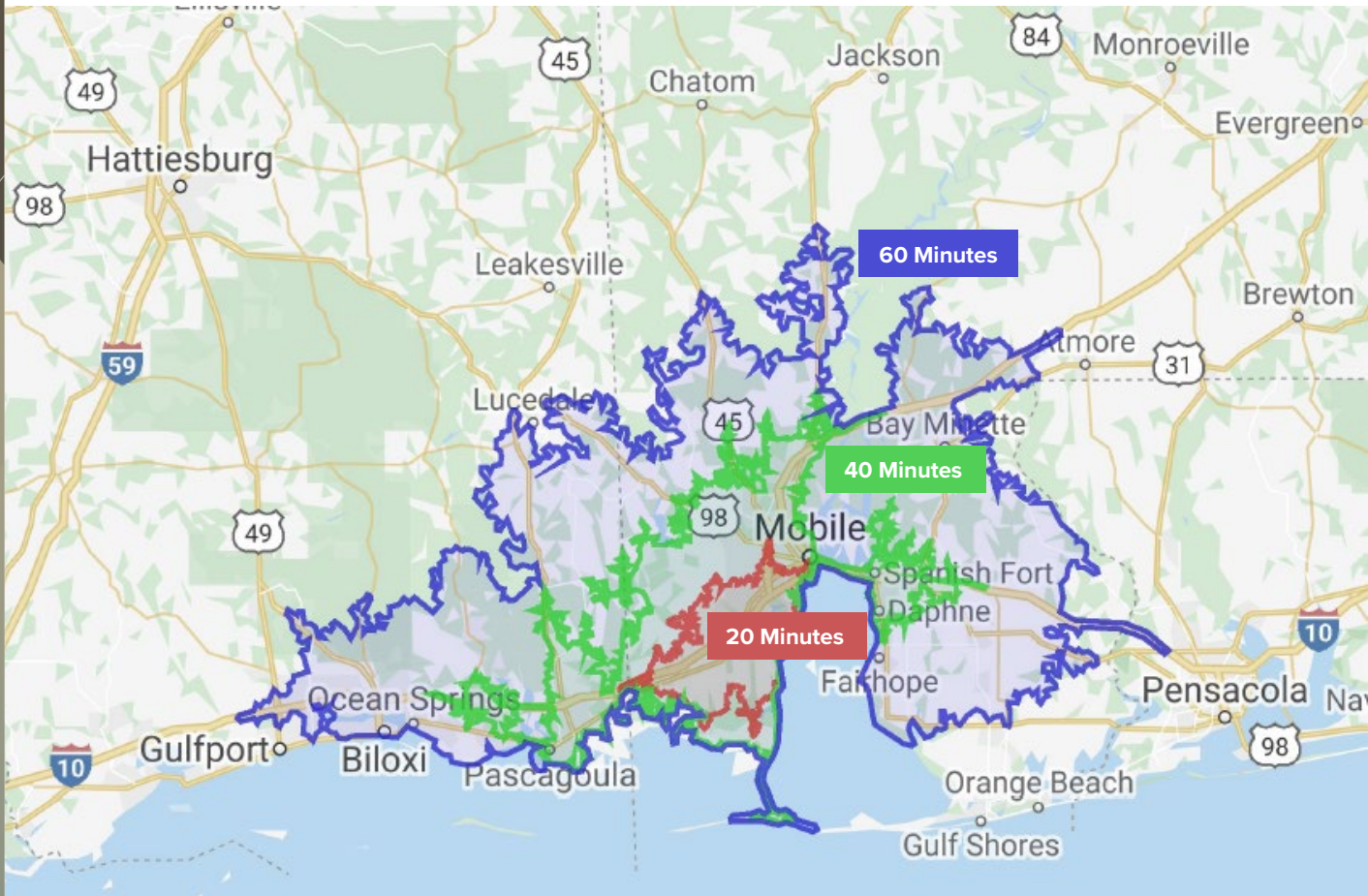
5 CLASS 1 RAILROADS

2 INTERSTATE SYSTEMS:
I-10 AND I-65

2 AIRPORTS IN MOBILE,
BOTH WITH FAA
PART 139 CERTIFICATION

*Information courtesy of Mobile Area Chamber of Commerce

AREA WORKFORCE



	20 MIN DRIVE TIME	40 MIN DRIVE TIME	60 MIN DRIVE TIME
Population	145,600	486,653	836,002
Median Household Income	\$44,149	\$46,268	\$49,868
Population 25+ By Educational Attainment			
9 th -12 th Grade, No Diploma	9.7%	8.6%	8.2%
High School Graduate	28.7%	26.2%	25.5%
Some College, No Degree	21.8%	22.4%	22.4%
Associate Degree	8.9%	9.3%	10.0%
Bachelor's Degree	15.8%	17.0%	16.7%
Graduate Degree	7.0%	9.0%	9.0%
Households by Income			
\$25,000-\$34,999	10.1%	10.1%	10.3%
\$35,000-\$49,999	14.5%	13.6%	13.5%
\$50,000-\$74,999	17.3%	17.4%	18.1%
\$75,000-\$99,999	11.9%	12.1%	12.7%
\$100,000-\$149,999	9.9%	10.5%	11.3%
\$150,000-\$199,999	3.5%	4.0%	4.1%
\$200,000+	2.8%	3.4%	3.8%

SOUTH ALABAMA LOGISTICS PARK

PLEASE CONTACT:

Philip Yost

First Vice President
+1 205 262 4701
philip.yost@cbre.com

© 2021 CBRE, Inc. All rights reserved. This information has been obtained from sources believed reliable, but has not been verified for accuracy or completeness. You should conduct a careful, independent investigation of the property and verify all information. Any reliance on this information is solely at your own risk. CBRE and the CBRE logo are service marks of CBRE, Inc. All other marks displayed on this document are the property of their respective owners, and the use of such logos does not imply any affiliation with or endorsement of CBRE. Photos herein are the property of their respective owners. Use of these images without the express written consent of the owner is prohibited.